

Datasheet: EDIConnect for HIPAA

HIPAA EDI Overview



The Health Insurance Portability and Accountability Act of 1996 (HIPAA) requires the establishment of national standards for electronic health care transactions and national identifiers for providers, health insurance plans, and employers. These standards are meant to improve the efficiency and effectiveness of the nation's health care system by encouraging the widespread use of electronic data interchange (EDI) in the U.S. health care system.

The standards are being implemented through HIPAA EDI Standard Transactions, which exchanges HIPAA-compliant electronic documents with approved transaction and code designations through EDI methods of communication (such as modem, FTP, e-mail, HTTP) between

medical practices and healthcare vendors. Although they are designated as HIPAA EDI-specific standards, HIPAA EDI is based on generally accepted EDI standards.

Integrating HIPAA transactions with back-end systems is a major issue facing payors and providers in the health-care industry, and one that Astera is uniquely positioned to solve. HIPAA transaction integration is time consuming and complex, involving a multitude of complex variables and scenarios that require knowledge of how to build a functional map matrix for each HIPAA transaction and an understanding of electronic data interchange (EDI) structures in order to integrate this data to third-party or home-grown claims management systems.

EDISConnect for HIPAA-Compliant Translation and Mapping

Astera has deep expertise in complex EDI structures and data mapping to ensure data quality and reliability, uniquely positioning the company to provide industry-leading HIPAA compliant software capabilities through EDISConnect, which offers a full range of functionality to meet the most demanding needs for HIPAA transaction integration at a very affordable price.

The seamless, unified EDISConnect interface offers built-in capabilities for incoming file translation, outgoing transaction construction, acknowledgement generation, process orchestration, and scheduling. With EDISConnect for handling specific HIPAA EDI standards, you get all of the robust functionality that comes with Astera's industry-leading Centerprise Data Integrator platform, plus additional support for healthcare-specific scenarios. Astera products will help you effectively process, validate, and map HIPAA documents like claims, insurance eligibility inquiries, premium payments and more, all in compliance with HIPAA requirements.

Key Features

- Intuitive user interface with visual tools to build bi-directional integration
- Incoming file translation and ingestion with built-in transaction sets
- Advanced data mapping, validation, and correction capabilities to better manage data ingestion
- Fast and easy outgoing transaction construction
- Acknowledgement generation
- Automation, process orchestration, and job scheduling



EDIConnect Technologies

Translator

The EDIConnect Translator translates data from disparate sources into a standardized structure that is compliant with HIPAA EDI standards. The EDIConnect Translator reads incoming EDI files containing single or multiple transactions, parses the transactions, and then translates the data and makes it available for mapping, transformation, and writing to the destination.

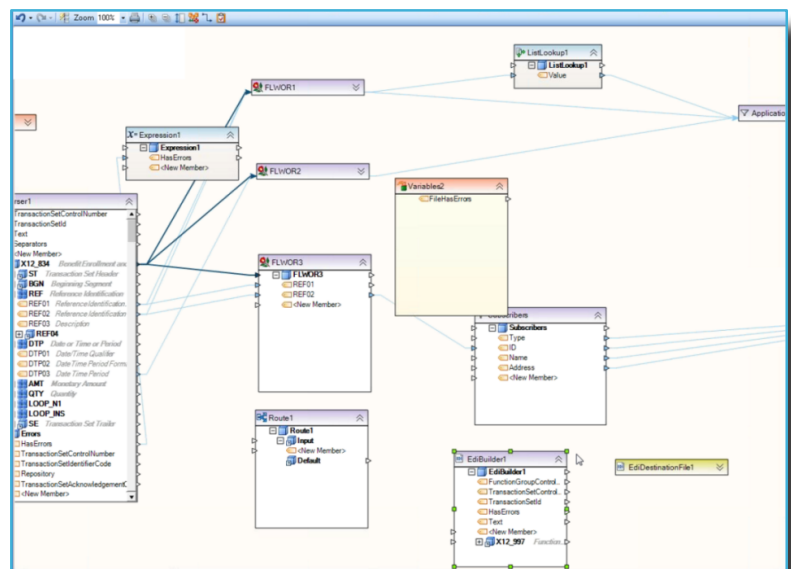
Key EDIConnect Translator features include:

- High-performance streaming EDI translator delivers performance and scalability to efficiently process all sizes of data volumes
- Drag-and-drop visual mapping interface designed specifically for complex hierarchical structures like EDI and extensible markup language (XML)
- Integrated validator to perform standard and custom validations

Transaction Builder

The EDIConnect Transaction Builder is one of the most powerful and intuitive EDI transaction builders on the market.

- Key Transaction Builder capabilities include:
- Building of complex, hierarchical EDI transactions using a visual, drag-and-drop designer
- Instant preview for viewing data at every step to quickly correct any mapping errors in real time
- Validation of outgoing messages against partners' requirements
- Data extraction from a wide assortment of data sources
- Hundreds of built-in transformations and functions to map data to EDI formats



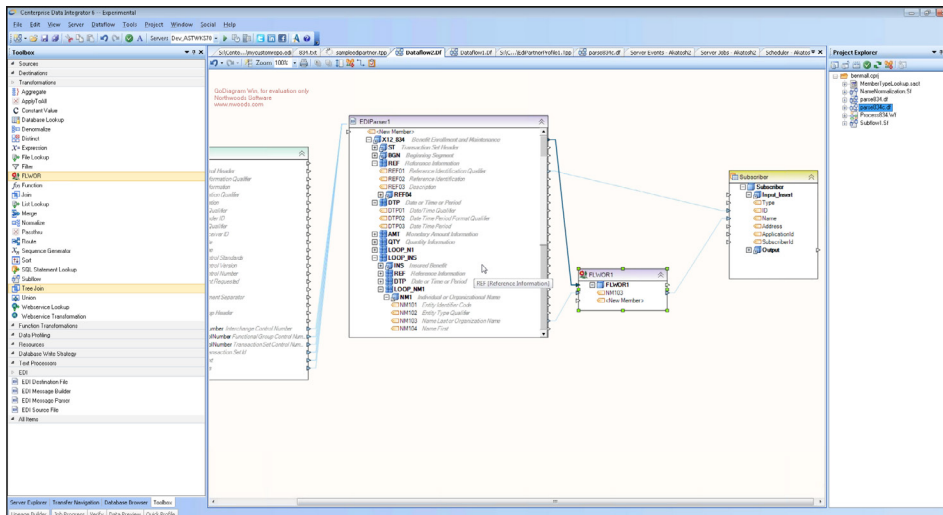
EDI Key Transformations

Hierarchical Data Overview

HIPAA-compliant EDI transactions often use complex hierarchical structures that must be parsed and validated and response structures must be built. EDIConnect enables users to process hierarchical data using unique transformations developed specifically for complex structures.

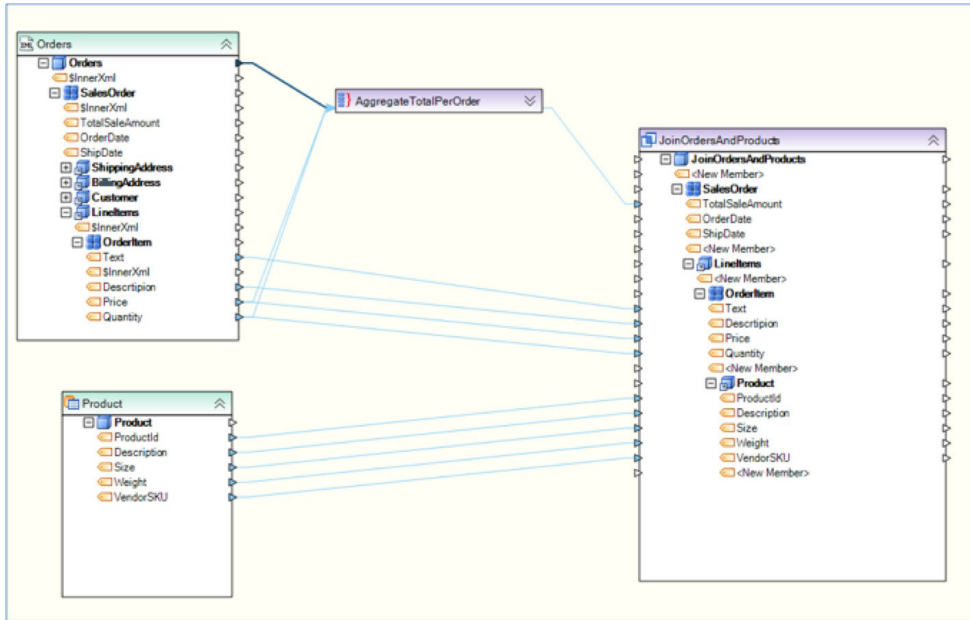
Scoped Transformations

Scoped Transformations that can be applied to specific nodes in a hierarchical tree. For instance, a specific tree collection can be sorted or filtered, or used to join two nodes within the same tree. This approach makes it possible to perform sophisticated transformations on complex data trees.



Tree Join Transformations

Tree Join Transformations enable users to construct complex hierarchical documents by joining multiple disparate data sources. This feature enables creation of a tree structure to be built within the dataflow and then that tree can be mapped to a destination using Centerprise mapping features.



Detached Transformations

Detached Transformations provide the ability to designate selected transformations as detached. Detached Transformations such as file lookup, database lookup, expression, subflow, and others can be used to create powerful validation and conversion functionalities.

FLWOR

The For-Let-Where-Order-Return (FLWOR) Transformation is used to perform specific operations on a tree structure.

ApplyToAll

This transformation applies a single function to multiple fields. It can be used to remove unwanted characters, perform a specific lookup, convert all values to a string, and parse dates using a specific logic, among other things.

Expression List Transformation

The Expression List Transformation enables creation of multiple expressions in a single action. This reduces clutter and streamlines dataflows.

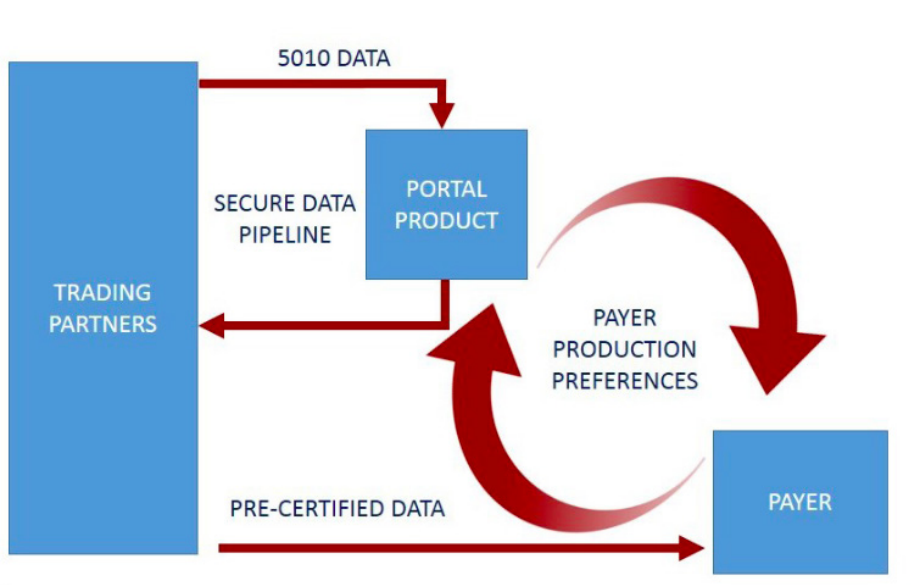
Source as Transformation

Selected data sources can now be used as transformations. This feature enables processing of multiple small files within a single dataflow. It is useful for situations where a large number of relatively small files are received that must be processed quickly.

Validator

The quality of HIPAA-compliant data is critical to ensure reliability, security, and privacy. The EDIConnect Validator enables users to perform a wide array of standard and custom validations for both incoming and outgoing transactions and scales to meet even the most challenging of data volumes. EDIConnect's EDI Validator key features include:

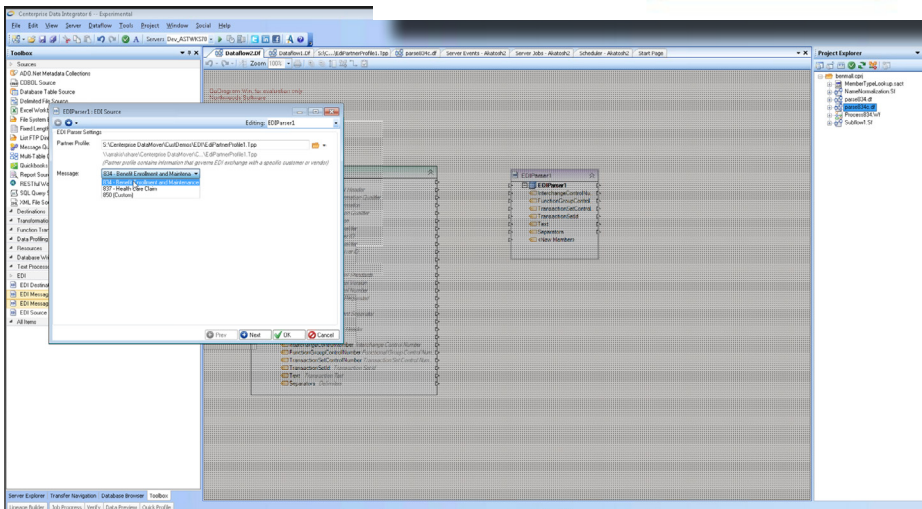
- Integrated with data translator and transaction builder functions for validation of incoming and outgoing EDI transactions
- High-performance design features that enable efficient processing of large data volumes
- "Error as data" feature exposes validation errors as mappable objects, enabling creation of custom destinations
- Fine-grained control of validations for each partner
- Generates technical and functional acknowledgement of incoming files



Partner Manager

The EDI Partner Manager enables users to define EDI partner information and build inbound and outbound customer transaction maps. Features include:

- Transaction parsing and information building such as terminators and date/time formats
- Association of custom transaction sets
- Validation settings



Test Drive EDIConnect for Free

Visit www.astera.com to download a risk-free trial of EDIConnect for HIPAA.



www.astera.com • sales@astera.com • 888-77-ASTERA

©2015 Astera Software