

Product Brochure

ReportMiner

sales@astera.com | 888-77-ASTERA



Table of Contents

Overview	1
Key Features	1
Intuitive User Interface	3
Easy-To-Build Model	4
Hierarchical Data Extraction	4
Single-Click Preview	5
Re-Use For Subsequent Conversions	5
Data Mapping and Export	6
Automation of Data Extraction Jobs	7
Performance	7
ReportMiner Benefits	8

Overview

Fast and accurate information drives today's businesses — manually transferring unstructured data into electronic formats is no longer a cost-effective option.

ReportMiner liberates business data trapped in printed documents such as reports, bank statements, and invoices in popular formats such as PDF, PRN, TXT, XLS, and XLSX. That electronic data can then be integrated into company databases and leveraged for operations and business intelligence applications. ReportMiner saves significant human resource time and dollars in terms of manual data entry and frees up those resources for more important tasks.

With ReportMiner's flexible and intuitive visual interface, users with little or no technical background can easily accomplish a wide range of data extraction tasks without employing expensive IT resources.

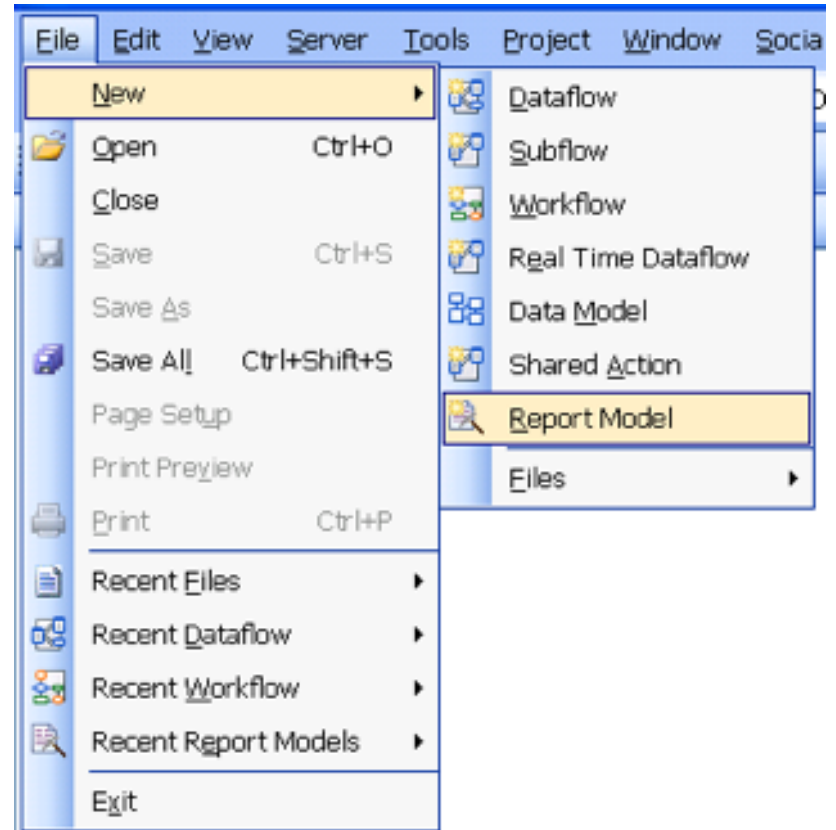
Key Features

- Intuitive user interface
- Extract data from popular formats, such as PDF, PRN, TXT, XLS, and XLSX
- Export data to databases like SQL Server, Access, MySQL, PostgreSQL, and any ODBC-compatible database, as well as formats such as fixed length, delimited, Excel, and XML
- Map extracted data to a dataflow for data integration and management processes
- Hierarchical data extraction
- Single-click preview
- Data mapping and export to any supported destination and format
- Extraction models can be saved and used over for subsequent conversions, saving time
- Performance: multi-core and multiprocessor hardware mine and deliver data quickly and efficiently

Using a sample document, a report model is visually defined. This model identifies regions and fields within the document and their interrelationships. The user friendly, drag-and-drop interface lets users quickly and easily view documents and define regions and fields, enabling them to build an extraction model in minutes.

The Auto-Create feature instantly identifies all the fields in a region and determines their data types and sizes. The hierarchical model feature extracts data from complex reports in a single pass. Single-click Preview verifies and tests report models as they are being built and highlights extracted data, as well as any conversion or validation errors. Report models can be saved for reuse over and over again.

Using Astera's industry-leading data mapping capabilities, data can be mapped and exported to any destination or format. Reports can also be used as a source object in a dataflow, where users can take advantage of the advanced transformations and conversion features of ReportMiner.



Intuitive User Interface

A WYSIWYG user interface enables users to view the document and define regions and fields. As these areas are defined, ReportMiner highlights all occurrences of the regions and fields. The Auto-Create field capability instantly identifies all the fields in a region and determines their data types and sizes. This capability enables users to define and verify a report model in minutes.

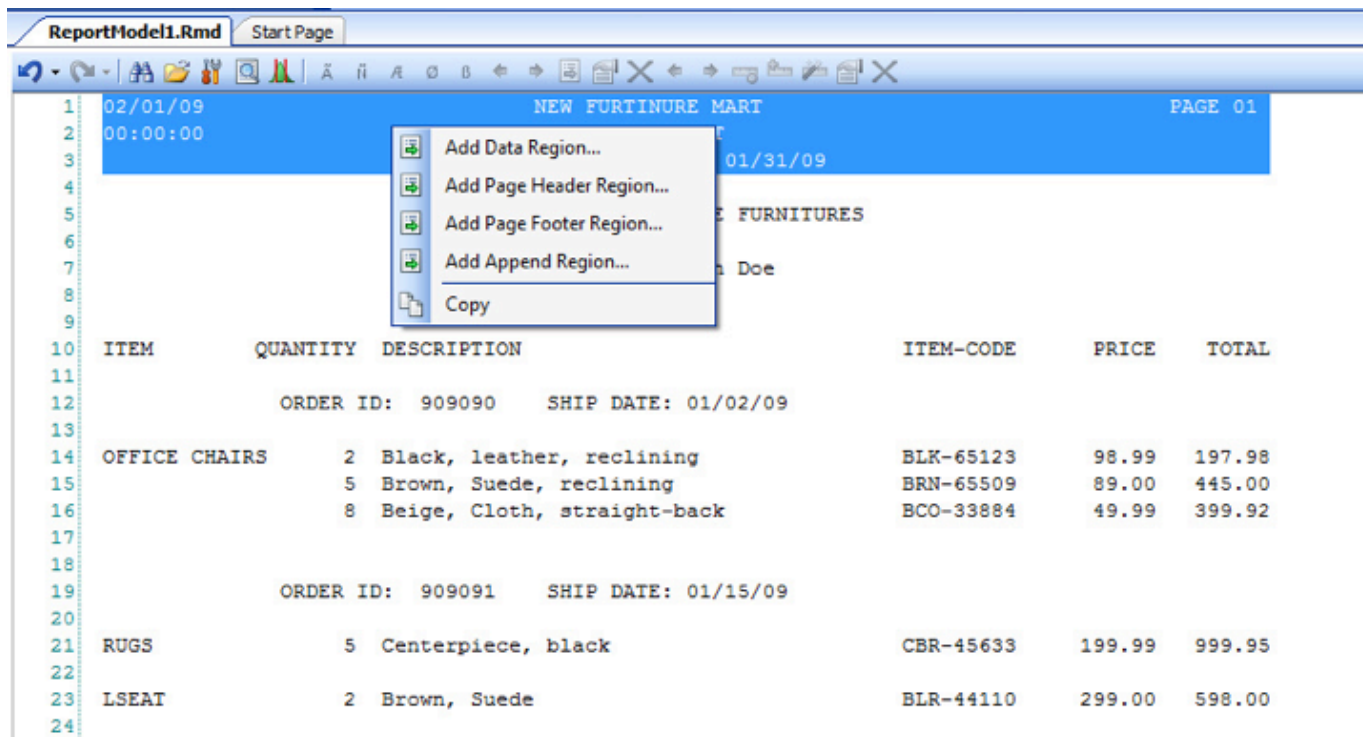


Figure 1. ReportMiner's intuitive interface enables users to view the document and define regions and fields

Easy-To-Build Model

Alternatively, the easy-to-use interface enables users to manually add a field by simply highlighting the field in the object with the mouse cursor, right-clicking it, and selecting Add Field. A new field is added to the Report Browser and the Report Definition Editor shows all the occurrences of this field in the report.

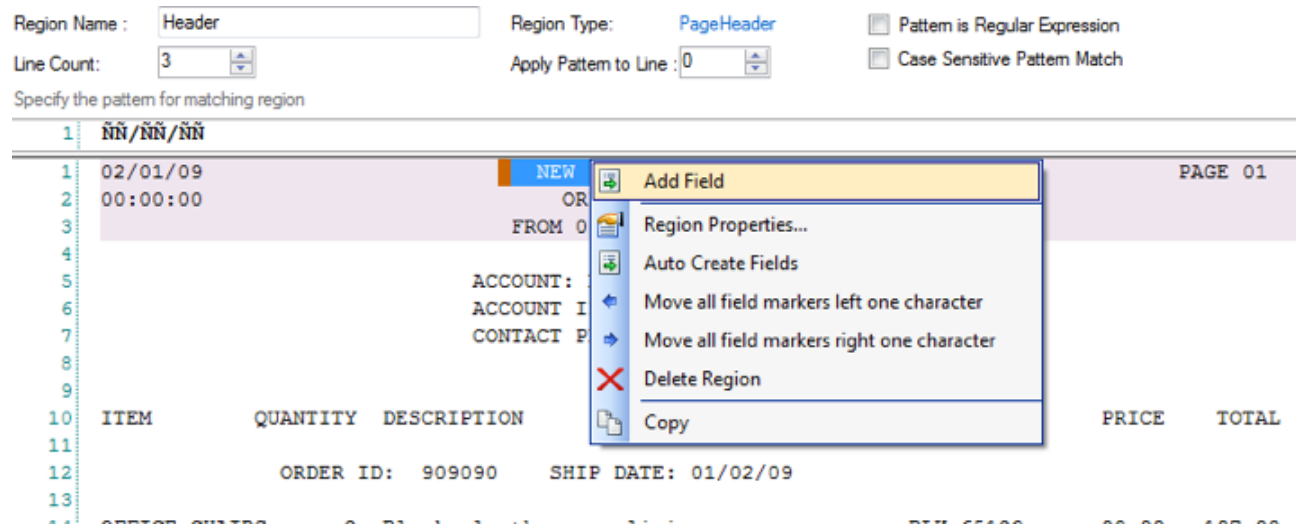


Figure 2. Users can manually add a field by simply highlighting the field in the object and selecting Add Field.


Hierarchical Data Extraction

Data extraction can be done from complex hierarchical reports in a single pass using the hierarchical model capability of ReportMiner. For example, a data region can have child data regions and the child regions can have their own children and so on.

Single-Click Preview

Single-click preview capability verifies and tests the report model as it is being built. This preview shows extracted data and any conversion or validation errors.

Data Preview

Source Record Count 

Data Preview for action Report_Source. Total Records 4. Records With Errors 0. Duration 00:00:00.418

Object Path	Company	Page	Time	Date_From	Date_To
Header	NEW FURTINUR	PAGE 01	12/2/2014 12:00:0	1/1/2009 12:00:00	1/31/2009 12:00:0

Object Path	Order_Id	Ship_Date
Order	909090	1/2/2009 12:00:00

Object Path	Item	Quantity	Description	Item_Code	Price	Total
Item	OFFICE CHAIRS	2	Black, leather, rec	BLK-65123	98.99	197.98
Item	OFFICE CHAIRS	5	Brown, Suede, re	BRN-65509	89	445
Item	OFFICE CHAIRS	8	Beige, Cloth, strai	BCO-33884	49.99	399.92

Object Path	Company	Page	Time	Date_From	Date_To
Header	NEW FURTINUR	PAGE 01	12/2/2014 12:00:0	1/1/2009 12:00:00	1/31/2009 12:00:0

Object Path	Order_Id	Ship_Date
Order	909091	1/15/2009 12:00:0

Object Path	Item	Quantity	Description	Item_Code	Price	Total
Item	RUGS	5	Centerpiece, blac	CBR-45633	199.99	999.95
Item	LSEAT	2	Brown, Suede	BLR-44110	299	598
Item	SOFA	5	Black, leather	BLS-41020	495	2475

Report_Source

Report_Source

Figure 3. The single-click preview verifies and tests the report model as it is being built

Re-Use Extraction Models

Extraction models can be saved and used over and over again for subsequent conversions, saving even more time.

Data Mapping and Export

ReportMiner enables data mapping and export to a plethora of destinations and formats of choice. Supported destinations include databases like SQL Sever, Access, MySQL, PostgreSQL, and any ODBC compatible database; file formats such as fixed length, delimited, Excel, and XML. You can also use your report as a source object in a dataflow, where you can take advantage of the advanced transformations and conversion features of ReportMiner.

The screenshot displays the ReportMiner interface. On the left, the 'Data Export Settings' panel is visible, with 'Record_Export' selected. The main window shows a report preview for 'NEW FURNITURE MART' with two pages. The first page (PAGE 01) includes an 'ORDERS REPORT' for the period 01/01/09 to 01/31/09, for account 'NORTH RIDGE FURNITURES' (ID: 123456, Contact: John Doe). It lists items such as 'OFFICE CHAIRS' and 'RUGS'. The second page (PAGE 02) shows an 'ORDERS REPORT' for the same period, for account 'METRO FURNITURES' (ID: 123457, Contact: Jane Doe), listing items like 'LSEAT' and 'SOFA'. At the bottom, the 'Job Progress' window shows a table of tasks:

Task Name	Input	Output	Errors	Details
Report_Source	4	4	0	1 Dev_ASTWKS712 1 : 12/3/2014 4:37:01 PM: _Record_Export: Job started on server ASTWKS712. Job id 1.
Record_Export	11	11	0	2 Dev_ASTWKS712 1 : 12/3/2014 4:37:01 PM: Destination file://C:\Temp\2014\Orders.xls
Report_Source_...	11	11	0	3 Dev_ASTWKS712 1 : 12/3/2014 4:37:01 PM: Record level log written to file://C:\Temp\2014\Temp\2014\Report_Source_log.pdf
Report_Source_...	11	11	0	4 Dev_ASTWKS712 1 : 12/3/2014 4:37:01 PM: _Record_Export: Job id 1. Job ended. Elapsed Time: 00:00:00.567

Figure 4. ReportMiner enables data mapping and export to a plethora of destinations and formats

Automation of Data Extraction Jobs

ReportMiner automates the data extraction process and expedites data preparation with features like email/FTP/folder integration, job scheduling, automated name and address parsing, and auto-creation of data extraction patterns. Users can design a workflow for a routine data extraction job and set time- or event-based triggers to run the job at specific intervals or every time an unstructured data file of a specific template is received.

Performance

ReportMiner is designed to efficiently process large data volumes. Built from the ground up as a high-performance parallel-processing engine, ReportMiner takes full advantage of today's multi-core and multiprocessor hardware to mine and deliver your data quickly and efficiently.

ReportMiner Benefits



Complete Data Integration

Leverage extracted data using Astera's Centerprise Data Integrator for a number of complex, hierarchical data integration and management processes.



High Performance

High-performance parallel-processing engine efficiently processes large data volumes.



Test and Verification

The single-click preview capability shows extracted data and any conversion or validation errors, enabling users to verify and test report models as they are being built.



Easy to Use

Drag-and-drop, code-free environment enables business users to accomplish a wide range of data extraction tasks without IT support.



High Performance

High-performance parallel-processing engine efficiently processes large data volumes.

ReportMiner Benefits



Near Real-Time Data Extraction

Extract data in near real-time or at specific intervals from files uploaded on a network folder, FTP location, or email inbox by designing a workflow



Job Monitoring

Monitor jobs' status and control the re-execution or termination of dataflows and workflows with advanced job monitoring capabilities.



Design Time Acceleration

Smart features, including auto-create regions and auto-create fields, simplifies and expedites the creation of extraction templates, providing speedy access to actionable insights.



Process Orchestration

Create workflows of any complexity and scale to automate the entire process, from sourcing data to storing in the target destination after conversion, transformation, and validation.



Workflow Status Notifications

Track the progress of workflows by setting up alert emails about abnormal terminations, task completions, errors, and other related activities.



Data Quality

ReportMiner allows business users to create custom data quality rules to establish 100% confidence in data.



www.astera.com

Contact us for more information or to request a free trial
sales@astera.com | 888-77-ASTERA

Copyright © 2018 Astera Software Incorporated. All rights reserved. Astera and Centerprise are registered trademarks of Astera Software Incorporated in the United States and / or other countries. Other marks are the property of their respective owners.